

TAKSTAR® 得勝

用户手册
User Manual

TAKSTAR®

广东得胜电子有限公司

生产基地：广东省惠州市博罗县龙溪镇富康一路2号

电话：400 6828 333 传真：0752-6383950

邮箱：XS@takstar.com 邮编：516121

网址：www.takstar.com

Guangdong Takstar Electronic Co.,Ltd.

Address: No. 2 Fu Kang Yi Rd., Longxi Boluo Huizhou Guangdong, 516121 China

International Sales:

Tel: +86 752 6383644

Email: sales@takstar.com

Website: www.takstar.com



DG-K10USB

UHF无线麦克风

UHF Wireless Microphone

尊敬的客户:

欢迎选购 DG-K10USB UHF无线麦克风, 为了确保您更好地使用本产品, 请在使用前, 详阅本说明书, 了解正确操作方法, 以获得理想的使用效果; 并请妥善保存好本说明书, 以备将来需要。

产品特性

- 采用UHF无线频段, 抗干扰能力强, 传输稳定可靠
- 采用双通道设计, 挑选过的固定工作频点, 可简单、快速配对连接
- 无线系统内置导频密钥, 可有效解决信号串扰
- 宽广的幅频响应特性, 具有良好的音质表现
- 接收机采用USB接口数字音频输出, 兼容多种设备使用
- 微型接收机设计, 便捷易用

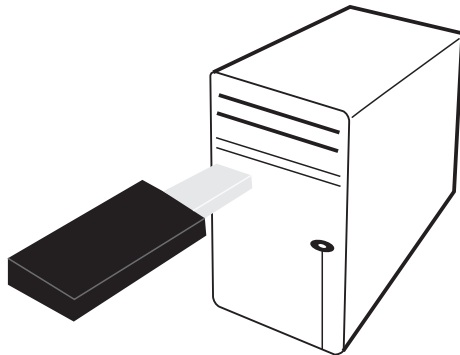
无线麦克风系统使用指导

不同的操作系统下, 操作过程略有不同, 这里以Windows xp、Windows 7操作系统为例进行说明。

如果实际操作与下文描述有区别, 请遵照具体的安装提示信息。

一、接收机连接PC (Windows xp)

1. 先将USB无线麦克风接收机按正确的方向插入PC设备的USB接口。PC系统会自动发现USB设备并自动安装驱动程序; 如无发现, 建议更换USB接口 (注意: USB接口需要提供的电流在5V/500mA以上来驱动USB无线麦克风接收机)。如图示:



3. If something abnormal happens when in use such as smoke or odor, please stop using the devices immediately and should have them inspected and repaired.
4. When you insert the batteries, do not reverse the polarities of the batteries. Please remove the batteries from the transmitter if you are not going to use the device for a long time.
5. It is forbidden to use a battery which the exterior insulation is worn out, or it might cause a short circuit.

Specification

Frequency Range: 740~790MHz
Frequency Control: PLL
Frequency Steadiness: $\pm 0.005\%$
Modulation Mode: FM
Number of Channels: 2 channels
Frequency Response: 80Hz-12KHz(GB-T17276)
Modulation Frequency Deviation: $\pm 75\text{KHz}$
S/N Ratio: 80dB(A+)
Total Harmonic Distortion: $\leq 1\%$ (at 1KHz)
Receiving Sensitivity: $\leq -70\text{dBm}$
Dynamic Range: 80dB A+
Transmitter Power: $\leq 10\text{mW}$
Transmitter Playtime: >8 hours (depends on the batteries)
Operating Range: approx. 10m

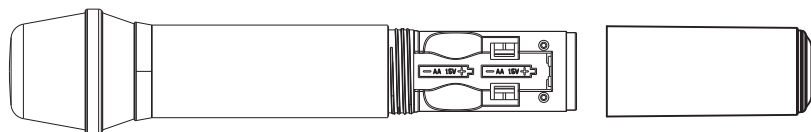
Product Content

DG-K10USB receiver	1pc
Handheld transmitter	2pcs
1.5V AA battery	4pcs
User manual	1pc

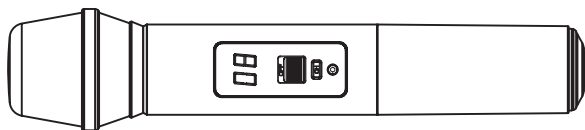
Handheld Transmitter

1. Unscrew the microphone battery compartment, insert 2 pcs 1.5V AA batteries in the right polarity.

Please refer to the picture below:



2. Push the power switch of the handheld microphone to the "ON" position (push the switch in the direction of the microphone cartridge), the digital display shows the corresponding Channel Number. Please refer to the picture below:



3. The digital display screen lights up for 3 seconds and then automatically goes out to reduce power consumption. When in use, press the "CH" button to light up the display screen to check the current channel, after 3 seconds the screen automatically goes out.
4. When the battery level is low, the display screen automatically lights up and the word "Lo" flashes, it indicates it's time to replace the batteries. When the battery level is extremely low, the device will automatically shut down and can't be used unless the batteries are replaced.

How to use the microphone system properly

1. When holding the microphone, put your hand in the middle part of it. It might affect the microphone's sound pickup effect if your hand is too close to the grille.
2. Adjust the distance between the microphone grille and mouth to avoid the distortion due to too loud input sound, the recommended distance is 2 to 7cm.
3. To avoid affecting the operating distance, it is suggested that metal object shouldn't be placed in the vicinity of the USB receiver.

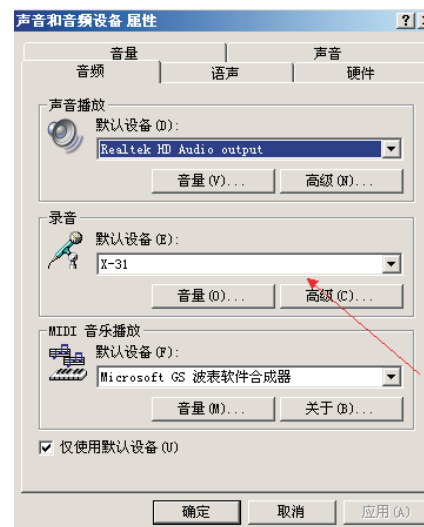
Caution

1. In order to avoid malfunction, please do not expose the device to high temperature, humidity, excessive dust and liquid.
2. Please do not shake the device or let it collide with other objects to avoid damage.

2. 右击“我的电脑”进入“管理”选择“设备管理器”双击“声音、视频控制器”检查设备检测是否正常（如无发现USB设备连接，需要排查USB接收端口功能是否正常）。如图示：



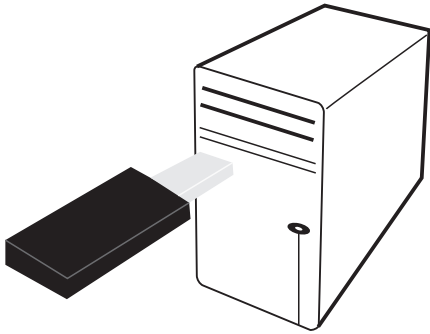
3. 检查PC音频输入选择设备。PC进入“控制面板”选择“声音、语音音频设备”点击“声音和音频设备”查看“音频”的录音输入选择。如图示：



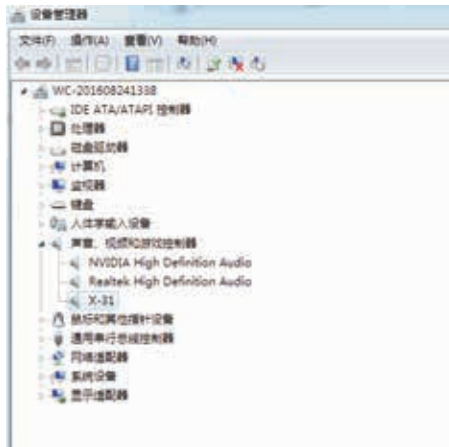
在上图的录音默认设备能选择到“X-31”型号，进行麦克风测试后，可以正常使用。

二、接收机连接PC (Windows 7)

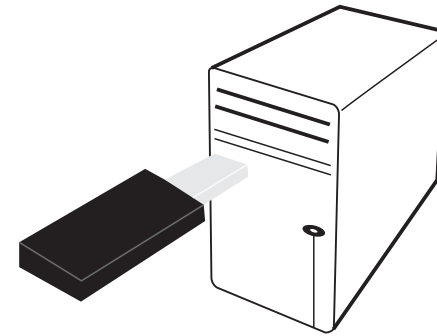
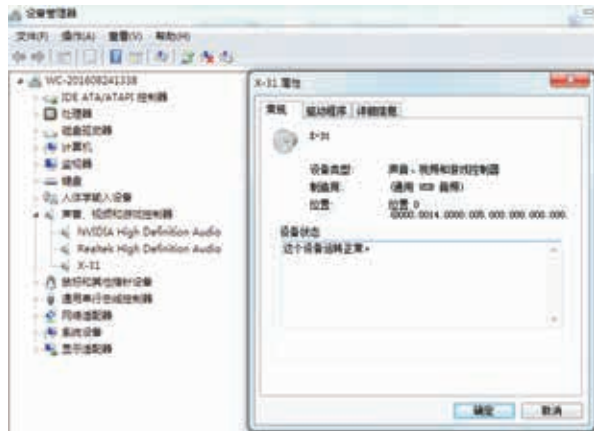
1. 先将USB无线麦克风接收机按正确的方向插入PC设备的USB接口。PC系统会自动发现USB设备并自动安装驱动程序；如无发现，建议更换USB接口（注意：USB接口需要提供的电流在5V/500mA以上来驱动USB无线麦克风接收机）。如图示：



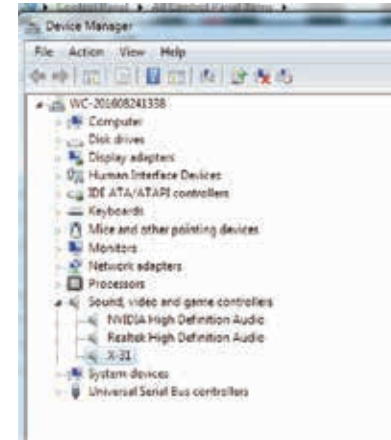
2. 在“控制面板”找到“设备管理器”打开，然后找到“声音、视频和游戏控制器”。如图所示：



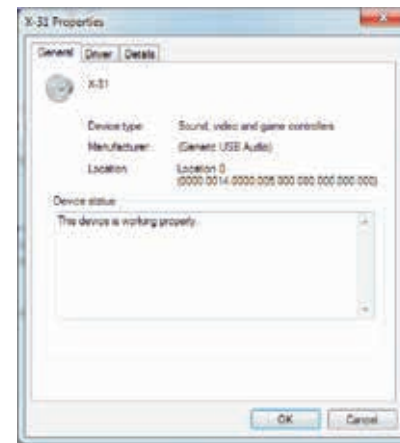
3. 在“声音、视频和游戏控制器”找到“X-31”打开，会显示设备运转正常；如异常需排查。如图所示：



2. Find "device manager" in "control panel" and open it, then find "sound, video and game controller" refer to the picture:



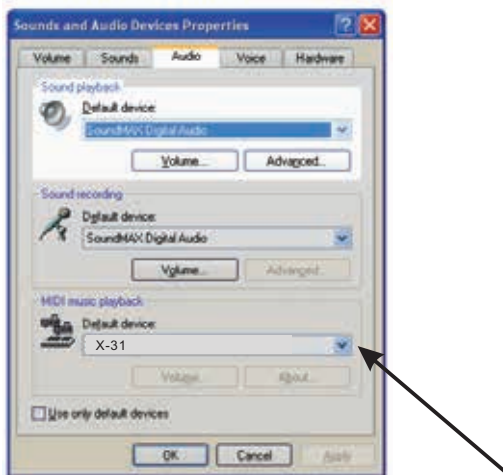
3. In "sound, video and game controller" find "X-31" and open it, then it displays the equipment operates normally. refer to the picture:



- Right-click My Computer\Management\Click Device Manager\Double click the “Sound, video and game controllers” to check if the device is functioning normally. if the PC system can not detect the USB device, check if the USB interface works normally. Please refer to the picture below:



- Check PC's selected audio input device. Enter “Control Panel\Sounds and Audio Devices Properties\Audio” to check the “Sound recording's Default device”. Please refer to the picture below:



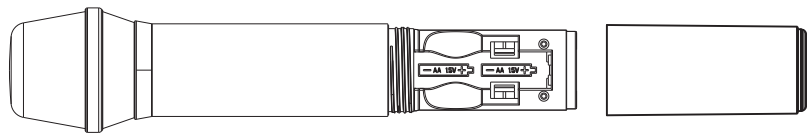
If you can select Model No. X-31 from the drop-down menu of the Default Device in the Sound Recording section, then the receiver is connected successfully and ready for use.

B. Connect the receiver to the PC (Windows 7)

- Plug the USB wireless microphone receiver into a USB port on the PC in the right direction, the PC system will detect the USB device and install the driver automatically, if the system can not detect the USB device, change another USB interface (Note: The USB interface should be able to provide more than 5V/500mA current to drive the USB wireless microphone receiver).

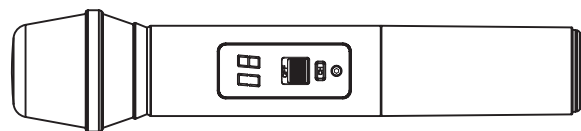
手持发射机

- 手持麦克风拧下尾管，取1.5V 5号电池按正确的方向装入2节。如图所示：



- 将手持麦克风的电源开关拨至开的位置（向音头方向推动），数码显示屏显示对应通道数。

如图所示：



- 数码显示屏显示3秒后自动熄灭，以降低耗电延长使用时间，使用中按“CH”键可点亮显示屏查看当前通道，3秒自动熄灭。
- 当电池电量低时，显示屏自动点亮，并闪烁显示“Lo”，提示更换电池。当电量严重低时，机器将自动关闭，不可使用，必需更换电池。

如何正确使用麦克风系统

- 手应握住手持麦克风的中部，若太靠近网头会影响麦克风的拾音效果。
- 调节麦克风网头与嘴之间的距离，避免输入声音太大导致失真，建议使用距离约2至7CM。
- USB无线麦克风接收机周围，建议不要有金属物品，避免影响使用距离。

无线麦克风系统使用注意事项

- 请勿将本机放在高温、潮湿、灰尘多的地点及碰到液体物质，以免造成故障。
- 请勿碰撞、振动本机，以免损坏本机。
- 在使用过程，若发生异常（如冒烟、异味），请立即拔出并将产品送检修。
- 装入电池时，不可将电池正负极颠倒，长时间不使用本机时，请将电池从发射机取出。
- 严禁使用外壳绝缘材料破损的电池，否则可能引起短路。

技术参数

- 频率范围: 740MHz~790MHz
- 频率控制方式: PLL
- 频率稳定度: $\pm 0.005\%$
- 调制方式: FM
- 信道数: 2
- 频率响应: 80Hz-12kHz (GB-T17276)
- 调制频偏: $\pm 75\text{KHz}$
- 信噪比: 80dB (A+)
- 失真度: $\leq 1\%$ (at 1KHz)
- 接收灵敏度: $\leq -70\text{dBm}$
- 动态范围: 80dB A+
- 发射机功率: $\leq 10\text{mW}$
- 发射机使用时间: >8小时 (视电池而定)
- 使用距离: 约10米

产品包装清单

DG-K10USB 接收机	1个
手持发射机	2支
1.5V AA电池	4节
使用说明书	1份

质保

质保期限: 1年

Dear customer,

Welcome to purchase Takstar DG-K10USB UHF wireless microphone. To ensure better operation, please read the manual carefully to know the right operation way. Please keep the manual for reference in future.

Features

- UHF frequency band for strong anti-interference capability and stable transmission
- Dual channel and selected fixed frequencies for easy, quick matching and connecting
- Built-in pilot frequency secret key can solve the signal crosstalk effectively
- Wide frequency response range, excellent sound quality
- Receiver adopts digital audio output via USB interface, compatible with multiple smart devices
- Portable mini receiver for convenient use

Operation Instruction

The installation process varies slightly for different operating systems, here we use Windows XP/Windows 7 as an example to illustrate, if the actual operation differs from what's described below, please follow the specific installation prompt message.

A. Connect the receiver to the PC (Windows XP)

1. Plug the USB wireless microphone receiver into a USB port on the PC in the right direction, the PC system will detect the USB device and install the driver automatically, if the PC system can not detect the USB device, then change another USB interface (Note: The USB interface should be able to provide more than 5V/500mA current to drive the USB wireless microphone receiver).

