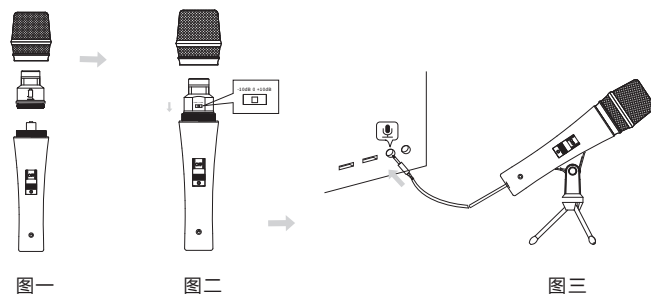




## 使用说明



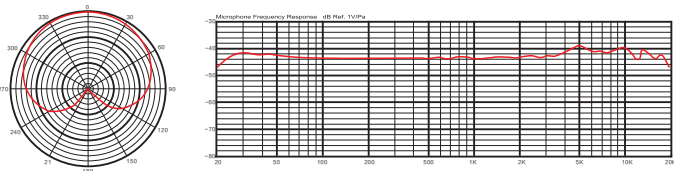
## 产品特性

- 个性的外观造型，多种颜色可选，将专业与时尚结合
- 采用电声转换技术，将声音自然、清晰地重现
- 三档拾音灵敏度调节，适用于多种场合拾音
- 高灵敏度和低阻抗设计，完全匹配于电脑集成声卡或外置声卡连接
- 内置过滤海绵，有效滤除呼吸声及风噪
- 配置C2-1手机K歌专用转换线，手机K歌更加方便、音质更佳
- 采用一节1.5V AAA电池供电，连续使用时间长达360小时

## 适用场合

家庭娱乐、手机K歌、网络K歌、个人录音、乐器录音等场合

## 频率响应



## 技术参数

-10dB开关档（适用于家庭娱乐）

灵敏度	-52dB±3dB (0dB=1V/Pa at 1kHz)
等效噪声级	≤22dB(IEC 581-5)
声压级	138dB(THD≤1% at 1kHz)

0dB开关档（适用于手机K歌、电脑K歌）

灵敏度	-42dB±3dB (0dB=1V/Pa at 1kHz)
等效噪声级	≤22dB(IEC 581-5)
声压级	128dB(THD≤1% at 1kHz)

+10dB开关档（适用于电脑K歌）

灵敏度	-32dB±3dB (0dB=1V/Pa at 1kHz)
等效噪声级	≤18dB(IEC 581-5)
声压级	118dB(THD≤1% at 1kHz)

单体	静电型电容音头
指向性	单指向
频率响应	30Hz-20kHz
输出阻抗	350Ω±30%
负载阻抗	≥1000Ω
使用电压	1.5V AAA电池

如图一：拆下网头和音头座。

如图二：接音头座上的电池极性标示，装上一节AAA电池，再装上音头座并根据拾音需要设定开关档位，然后装上网头。

如图三：接上三角架，连接好电脑与麦克风，将管体上的开关推至“ON”处，进入拾音状态。

## 注意事项

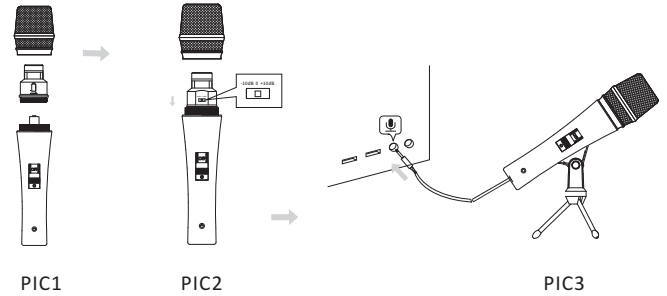
- 麦克风停止使用时应将开关推至“OFF”处，可以延长电池的使用时间。
- 使用麦克风时注意不要从高处落下或给予强烈冲击，以免产生冲击声，造成麦克风的损坏。
- 麦克风不使用时应存放在干燥清洁的地方，避免在温度过高的场所保管或使用，以免影响灵敏度和音色。
- 电池存放应远离儿童，以免误入口中。

## 标准配置

ST-105麦克风三脚架	一个
MH-6夹子	一个
C3-3线	一条
C2-1线	一条
3.5转6.3插头	一个
7号电池	一节
说明书	一份
合格证	一份
保修卡	一份



## Operating Instruction



PIC1 : Screw off the headcase and the capsule holder

PIC2: Put in 1pc AAA battery according to the marked polarity on the capsule holder, screw on the capsule holder and adjust the sensitivity to an appropriate level as needed, then screw on the headcase

PIC3: Mount the microphone on the tripod and connect it to the computer. Push the switch on the housing to "ON" position, the microphone is under the vocal pickup status

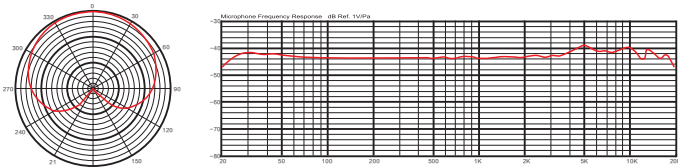
## Features

- Unique outlook design with multiple optional colors, perfect combination of profession and fashion
- High efficiency electro-acoustic conversion technology ensures natural and clear sound reproduction
- 3-step sensitivity adjustment switch for different application
- High sensitivity and low impedance design perfectly matches the computer integrated sound card or external sound card connection
- Built-in filter windscreen effectively eliminate the unwanted noise such as breathing or wind noise
- Provided with C2-1 special conversion cable for convenient mobile phone karaoke and better sound performance
- Powered by 1pc 1.5V AAA battery, long operating time up to 360hrs

## Application

Internet TV karaoke, mobile phone karaoke, network karaoke, PC recording, instrument recording

## Frequency response graph



## Specification

-10dB (for home entertainment)	
Sensitivity	-52dB±3dB (0dB=1V/Pa at 1kHz)
Equivalent Noise Level	≤22dB(IEC 581-5)
Max. Input SPL	138dB( THD≤1% at 1kHz)
0dB (for mobile phone karaoke, network karaoke)	
Sensitivity	-42dB±3dB (0dB=1V/Pa at 1kHz)
Equivalent Noise Level	≤22dB(IEC 581-5)
Max. Input SPL	128dB(THD≤1% at 1kHz)
+10dB (for network karaoke)	
Sensitivity	-32dB±3dB (0dB=1V/Pa at 1kHz)
Equivalent Noise Level	≤18dB(IEC 581-5)
Max. Input SPL	118dB( THD≤1% at 1kHz)
Transducer Principle	Back electret condenser
Polar Pattern	Cardioid
Frequency Response	30Hz-20kHz
Output Impedance	350Ω±30%
Load Impedance	≥1000Ω
Power Requirement	1.5V AAA battery

## Caution

- When the microphone is not used, please push the switch to position "OFF" to extend the playtime of the battery.
- When using the microphone, do not drop it from high or apply strong shock to it to avoid impulsive sound and damage to the microphone.
- To maintain the sensitivity and quality of sound reproduction, avoid exposing it to moisture and extreme temperatures.
- Keep the battery out of the reach of children to avoid eating by mistake

## Product Content

ST-105 microphone tripod	1pc
HM-6 Microphone Clamp	1pc
C3-3 cable	1pc
C2-1 conversion cable	1pc
Φ3.5mm-Φ6.3mm plug	1pc
1.5V AAA Battery	1pc
User manual	1pc
Qualified certificate	1pc