

TAKSTAR® 得胜

TKA-422

合并式四通道功放
4-Channel Integrated Amplifier



使用说明
User Manual

TKA-422 合并式四通道功放

■ 前言

尊敬的用户：

感谢您选购得胜TKA-422四通道功放，为了您能够更好的了解使用本产品，建议您在使用前仔细阅读本说明书。

若存在有疑问或者您有宝贵的建议，可通过拨打得胜官方服务热线400 6828 333或微信扫描二维码关注得胜官方公众号与我们联系。



■ 产品特性

- 带蓝牙输入，录音输出功能。
- 4通道输出，每通道输出功率220W（8Ω），可带负载4-8欧姆
- TKA-422功放是一款合并式专业功放机。带有麦克风效果调节功能，在音质表现上，低音，中音，高音平衡，在音乐表现上，失真度低，频响宽。人声表现力突出、逼真。自动过载保护、风冷式散热设计。

■ 技术参数

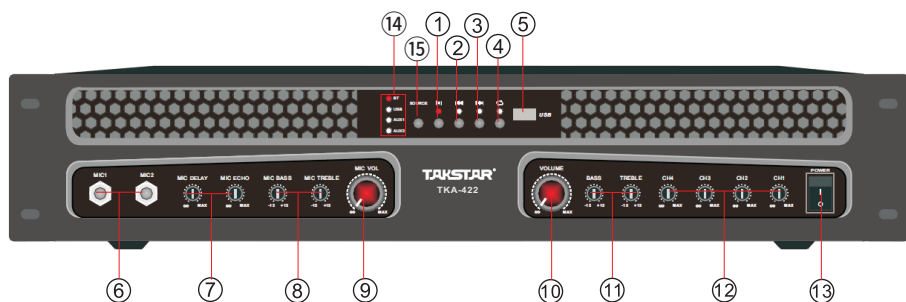
- 输出功率：220W*4（8Ω）
- 总谐波失真：<0.01%（1KHz,1W,8Ω）
- 频率响应：20Hz-20KHz
- 信噪比：≥90dB(A计权)
- 输入灵敏度：250mV
- 麦克风输入灵敏度：20mV
- 电源要求：~AC220V/50Hz
- 外形尺寸（宽*长*高）：480mm*445mm*90mm
- 重量：13Kg

■ 适用范围

用于教室、小型会议室

TKA-422 合并式四通道功放

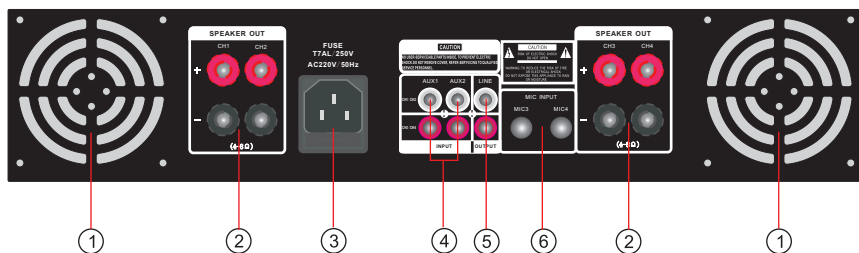
■ 前面板功能说明



- ① 暂停/播放按键
- ② 上一曲按键
- ③ 下一曲按键
- ④ 循环按键
- ⑤ USB输入接口
- ⑥ 麦克风插孔(MIC1、MIC2)
- ⑦ DELAY/ECHO回音时间/回音强度
- ⑧ MIC TONE BASS/TREBLE麦克风音质控制
- ⑨ 麦克风总音量旋钮
- ⑩ 音乐总音量旋钮
- ⑪ MUSIC TONE BASS/TREBLE音乐音质控制
- ⑫ CH1-CH4音量控制
- ⑬ 电源开关按键
- ⑭ 输入信号源指示灯
- ⑮ 输入模式切换按键

TKA-422 合并式四通道功放

■ 后面板功能说明

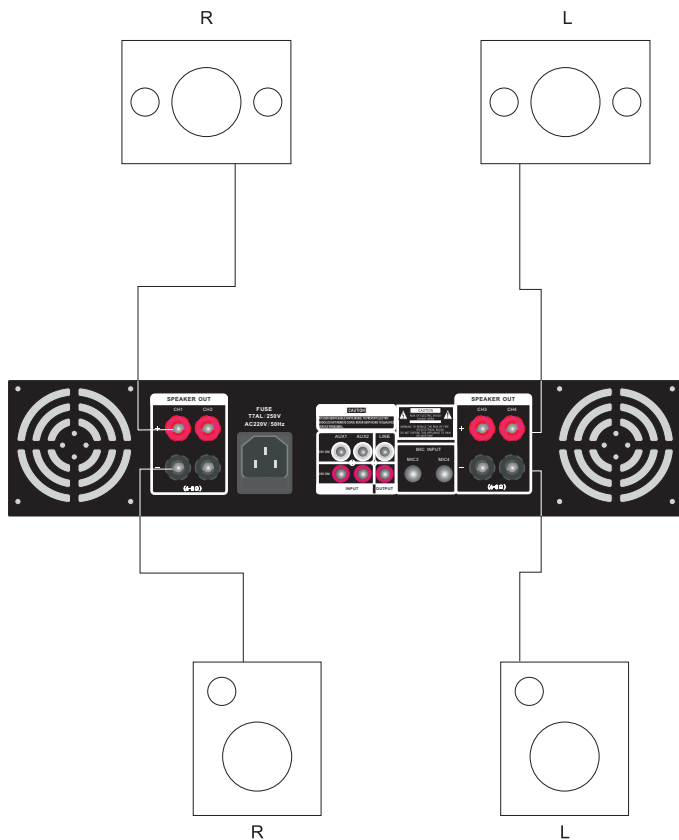


- ① 风扇散热窗
- ② SPEAKER SYSTEM喇叭输出接线端子
用于喇叭连接之用，可分成一组系统连接。
只接SYSTEM A时，喇叭最低阻抗不可低于4欧；
只接SYSTEM B时，喇叭最低阻抗不可低于4欧；
SYSTEM A与SYSTEM B同时接时，喇叭阻抗不可低于8欧。
- ③ 电源连接头
- ④ AUX1、AUX2音频输入插孔
- ⑤ LINE输出座
- ⑥ 话筒3、4输入插孔

TKA-422 合并式四通道功放

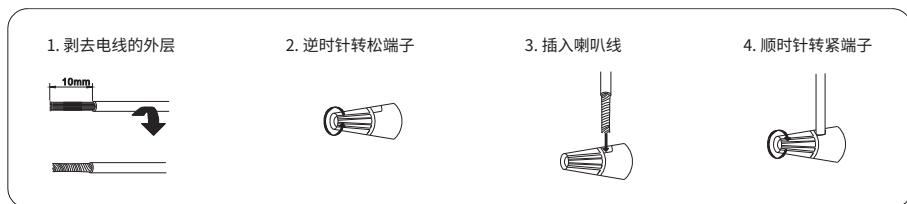
■ 接线示意图

1. 按指定的阻抗连接扬声器和扩大机的端子。
2. 确保扬声器与扩大机的极性连接正确。
3. 左右扬声器或正负极性错误，声音会失真或缺乏低音。
4. 扬声器的任何错误连接可能会导致这台扩大机产生故障，甚至损坏这台机器。

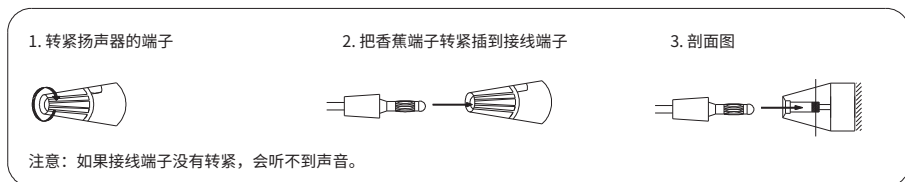


TKA-422 合并式四通道功放

※ 连接扬声器线



※ 连接扬声器和香蕉端子



■ 安全警示

为避免电击、高温、着火、辐射、爆炸、机械危险以及使用不当等可能造成的人身伤害或财产损失，使用本产品，请仔细阅读并遵守以下事项：

1. 使用产品时请确认所连接设备与本产品功率是否匹配以及合理调整音量大小，不要在超过产品功率及大音量下长时间使用，以免造成产品异常和听力损伤；
2. 使用中若发现有异常（如冒烟、异味等），请立即关闭电源开关并拔掉电源插头，然后将产品送经销商检修；
3. 本产品及配件都应放置在室内干燥通风处，勿长期存放在潮湿、灰尘多的环境，使用中避免靠近火源、雨淋、进水、过度碰撞、抛掷、振动本机及覆盖通风孔，以免损坏其功能；
4. 若产品需要固定于墙壁或天花板上时，请确保固定到位，防止因固定强度不足导致产品发生跌落危险；
5. 使用该产品时需遵守相关安全规定，法律法规明确禁止使用场合请勿使用本机，以免导致意外事故；
6. 请不要自行拆机改装或维修，以防止出现人身伤害，如有问题或服务需求请联系当地经销商跟进处理。



仅适用于海拔2000
米以下地区使用



仅适用于非热带
气候条件下使用

TKA-422 4-Channel Integrated Amplifier

■ Preface

Dear Customer,

Thank you for purchasing TAKSTAR TKA-422 4-Channel Integrated Amplifier. Please read the user manual carefully before use and keep it for future reference.

If you have any questions or suggestions, please contact our local dealer.

■ Features

- It has the function of Bluetooth input and recording output.
- It features 4-channel output with 220W per channel (8Ω) and a 4-8 ohm load per channel.
- TKA-422 is a professional integrated amplifier. It features microphone effect adjustment function, automatic overload protection and air-cooled heat dissipation design. In sound quality, the bass, mid and treble are balanced; in music, the distortion is low and the frequency response is wide; in human voice, it is outstanding and lifelike.

■ Specifications

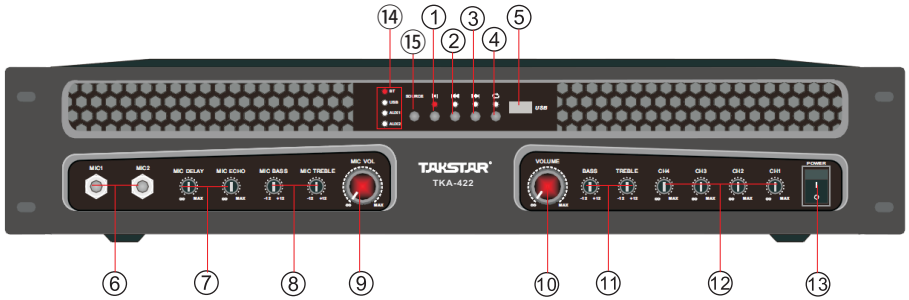
- Output Power: 220W*4 (8Ω)
- THD: <0.01% (1KHz, 1W, 8Ω)
- Frequency Response: 20Hz-20KHz
- S/N Ratio: ≥90dB (A-weighted)
- Input Sensitivity: 250mV
- MIC Input Sensitivity: 20mV
- Power Supply: AC220V/50Hz
- Dimensions (W*L*H): 480mm*445mm*90mm
- Weight: 13Kg

■ Applications

Classrooms, small conference rooms

TKA-422 4-Channel Integrated Amplifier

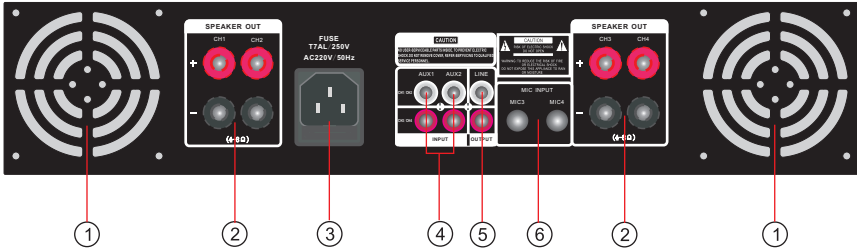
■ Introduction to the Front Panel



- ① Pause/Play Button
- ② Previous Button
- ③ Next Button
- ④ Repeat Button
- ⑤ USB Input Interface
- ⑥ MIC jacks (MIC1, MIC2)
- ⑦ Echo Time/Echo Strength
- ⑧ MIC Tone Control
- ⑨ MIC Volume Knob
- ⑩ MUSIC Volume Knob
- ⑪ MUSIC Tone Control
- ⑫ Volume Control
- ⑬ Power Switch Button
- ⑭ Input Signal Indicators
- ⑮ Input Source Selection Button

TKA-422 4-Channel Integrated Amplifier

■ Introduction to the Rear Panel



① Cooling fan

② Output binding posts

These binding posts are for speaker connection.

When only SYSTEM A is connected, the minimum speaker impedance cannot be lower than 4 ohms;

when only SYSTEM B is connected, the minimum speaker impedance cannot be lower than 4 ohms;

when SYSTEM A and SYSTEM B are connected at the same time, the speaker impedance cannot be lower than 8 ohms.

③ Power connector

④ AUX1, AUX2 audio input jacks

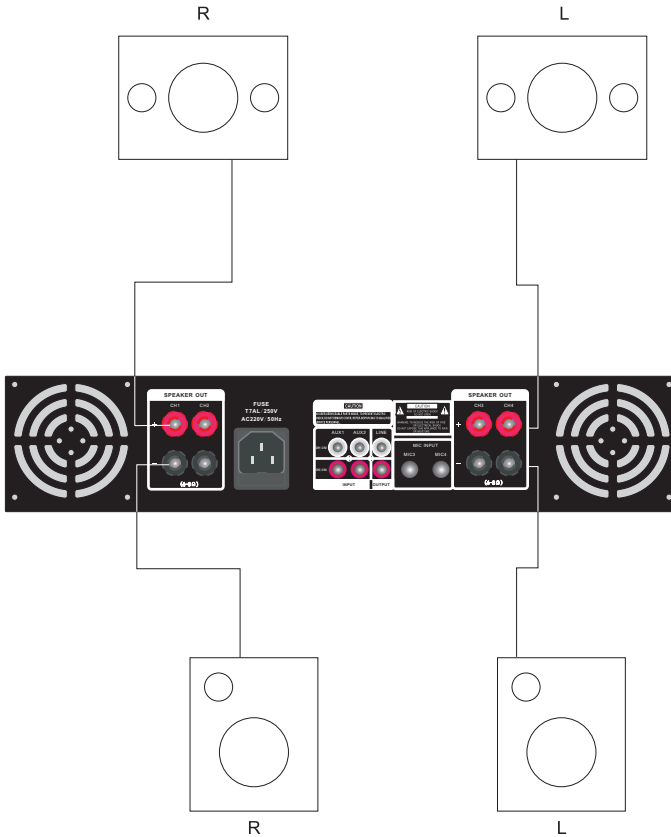
⑤ LINE output jacks

⑥ MIC3, 4 input jacks

TKA-422 4-Channel Integrated Amplifier

■ Wiring Diagram

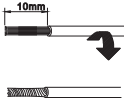
1. Connect the terminals of the speaker and the amplifier according to the specified impedance.
2. Make sure that the polarities of the speaker and the amplifier are connected correctly.
3. When the left and right speakers or the positive and negative polarities are not connected correctly, the sound will be distorted or there will be a lack of bass.
4. Connecting to the speaker incorrectly may cause this amplifier to malfunction or even damage it.



TKA-422 4-Channel Integrated Amplifier

※ Connecting speaker cables

1. Peel off about 10 mm of sheathing from the tip of the speaker cable, and then twist the core wire tightly.



2. Turn the speaker terminal counterclockwise to loosen it.



3. Insert the speaker cable's core wire to the hilt into the speaker terminal.

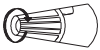


4. Turn the speaker terminal clockwise to tighten it.

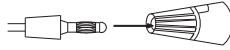


※ Using a banana plug

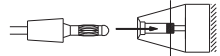
1. Tighten the speaker terminal.



2. Insert a banana plug into the end of the terminal.



3. Sectional view.



Note: If the terminal is not tightened, no sound will be heard.

■ Safety Instructions

To avoid possible personal injury or property damage caused by electric shock, high temperature, fire, radiation, explosion, mechanical hazards, and improper use, please read and observe the following items before using the product.

1. When using the product, please confirm whether the power of the connected device matches the power of the product, and adjust the volume of the device. Do not use it for a long time when the power of the product is exceeded or at a high volume to avoid product failure and hearing damage.
2. If there is any abnormality (such as smoke, odor, etc.) during use, please turn off the power switch and unplug the power plug immediately, and then send the product to the dealer for maintenance.
3. The product and accessories should be placed indoors in a dry and ventilated place. Do not store them in a humid and dusty environment for a long time. Avoid getting close to fire, rain, water, excessive collision, throwing, vibrating the machine and covering the ventilation holes during use, so as not to damage its function.
4. If the product needs to be fixed on the wall or ceiling, please make sure to fix it in place to prevent it from falling.
5. When using the product, you must abide by the relevant safety regulations. Please do not use the product in the occasions that are clearly prohibited by laws and regulations to avoid accidents.
6. Please do not disassemble, refit or repair the product by yourself to prevent personal injury. If you have any questions or service needs, please contact the local dealer.



Only suitable for use in areas below 2000 meters above sea level



Only suitable for use in non-tropical climates

产品服务保证书

姓名：_____ 电话：_____ 地址：_____

商品：_____ 型号：_____ 购买日期：_____ 年 _____ 月 _____ 日

维修记录栏 (由维修员填写)	维修员签名	日期

注意事项：

1. 本单为保修凭证，请用户妥善保管，如有遗失，恕不保修或退换。
2. 保修期限制：购买之日起十二个月内。
3. 除了不可抗力事件损坏外，由本公司负责，免费维修。
4. 如属保管不善或使用不当造成的损坏，维修点将酌情收费。
5. 擅自拆卸维修者，不予保修。
6. 以上保修条款仅限于中国市场适用（不含港澳台地区）。

◆ 广东得胜电子有限公司 ◆ 电话：400-6828-333 ◆ 地址：广东省惠州市博罗县龙溪街道雷康一路2号



扫一扫，了解更多产品
Scan for more
product information

**广东省电声工程技术研究开发中心
广东得胜电子有限公司制造**

地址：广东省惠州市博罗县龙溪街道富康一路2号
服务热线：400 6828 333 传真：0752-6383950
邮箱：xs@takstar.com
网址：www.takstar.com

Guangdong Takstar Electronic Co., Ltd.
Address: No. 2 Fu Kang Yi Rd., Longxi Boluo
Huizhou, Guangdong 516121 China
Tel: 86 752 6383644 Fax: 86 752 6383952
Email: sales@takstar.com
Website: www.takstar.com